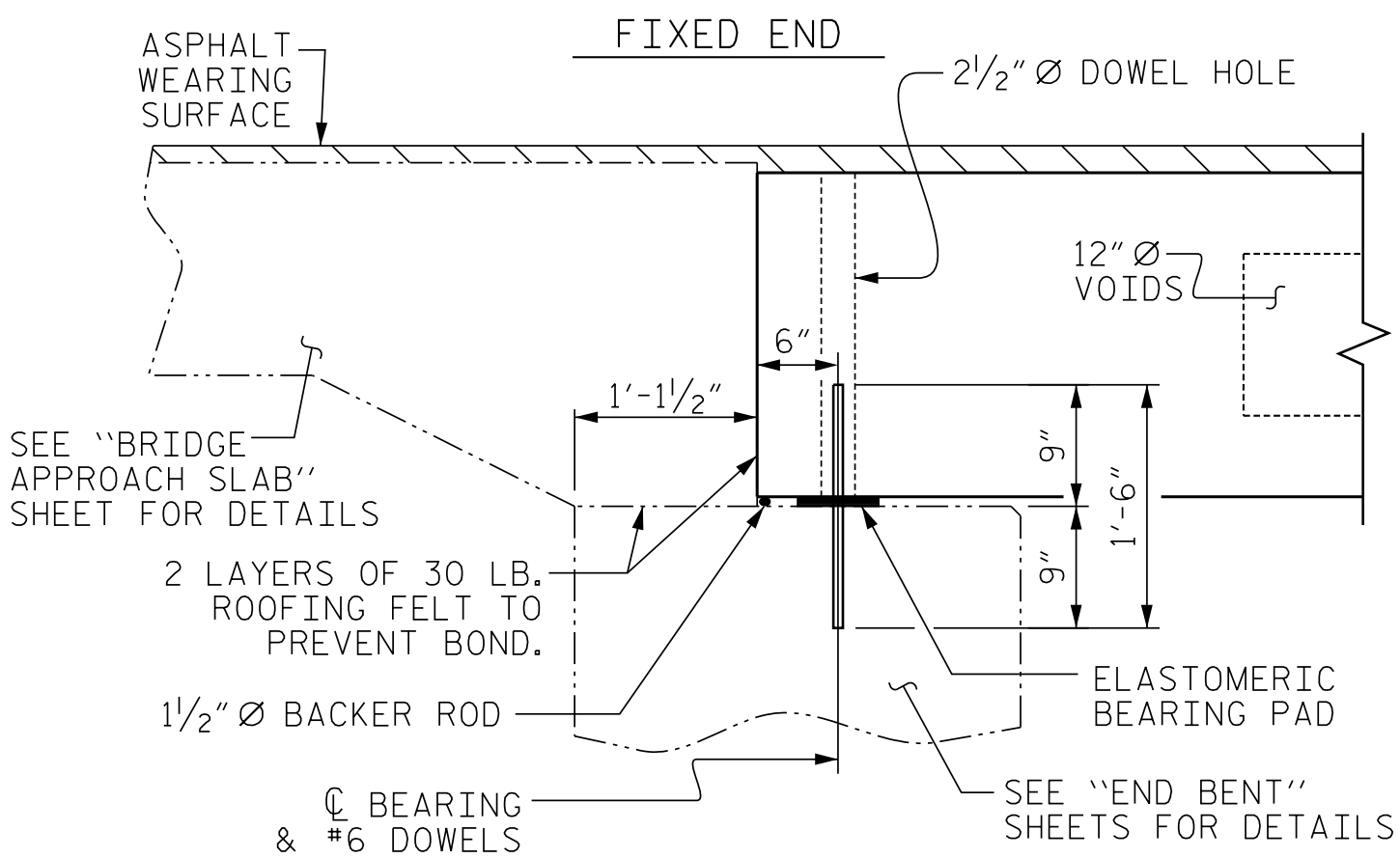


HALF SECTION
AT INTERMEDIATE DIAPHRAGMS

TYPICAL SECTION

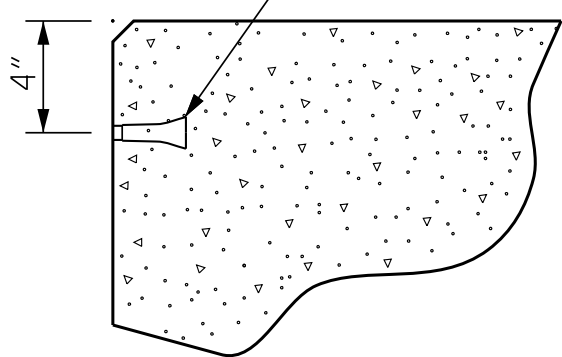
HALF SECTION
THROUGH VOIDS

* - THE MAXIMUM BARRIER RAIL HEIGHT AND ASPHALT THICKNESS IS SHOWN. THE HEIGHT OF THE BARRIER RAIL AND ASPHALT THICKNESS VARIES WHILE THE TOP OF THE BARRIER RAIL FOLLOWS THE PROFILE OF THE GUTTERLINE. FOR RAIL HEIGHT DETAILS AND ASPHALT THICKNESS, SEE THE "VERTICAL CONCRETE BARRIER RAIL SECTION" DETAIL.

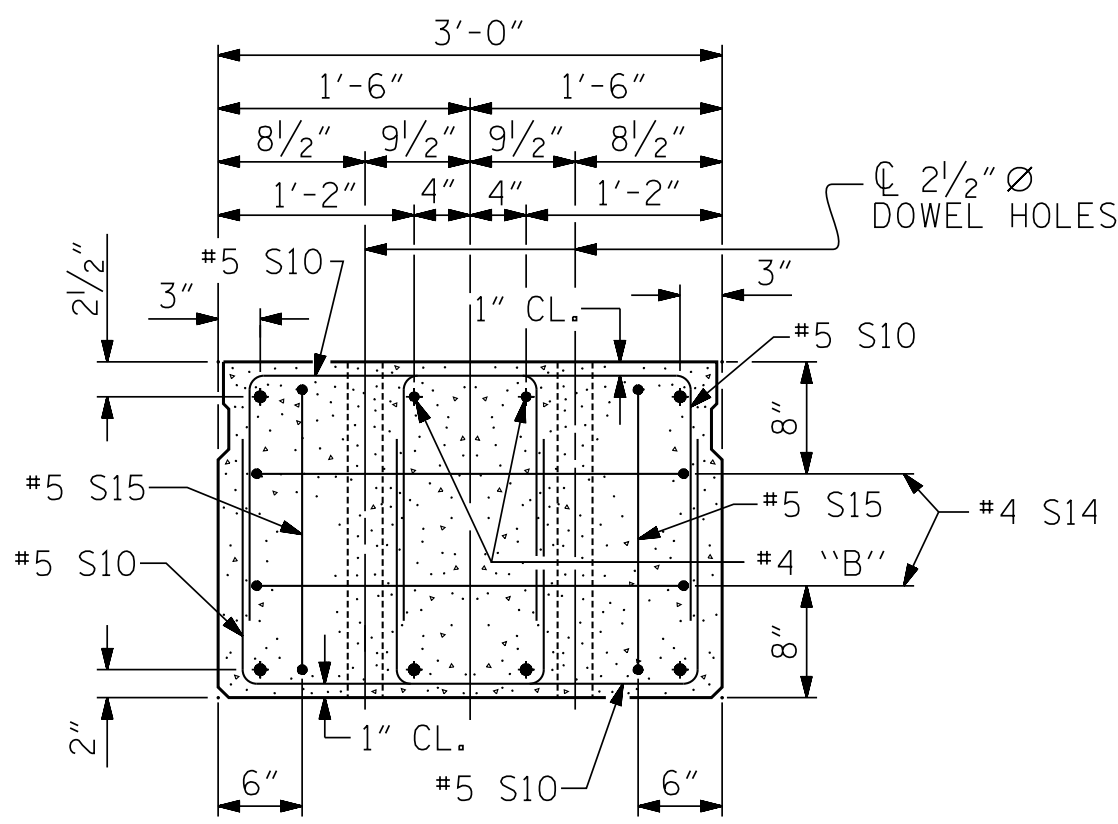


SECTION AT END BENT

PERMITTED THREADED INSERT
CAST IN OUTSIDE FACE OF
EXTERIOR UNIT AND
RECESSED 3/8" SIZE TO BE
DETERMINED
BY CONTRACTOR.

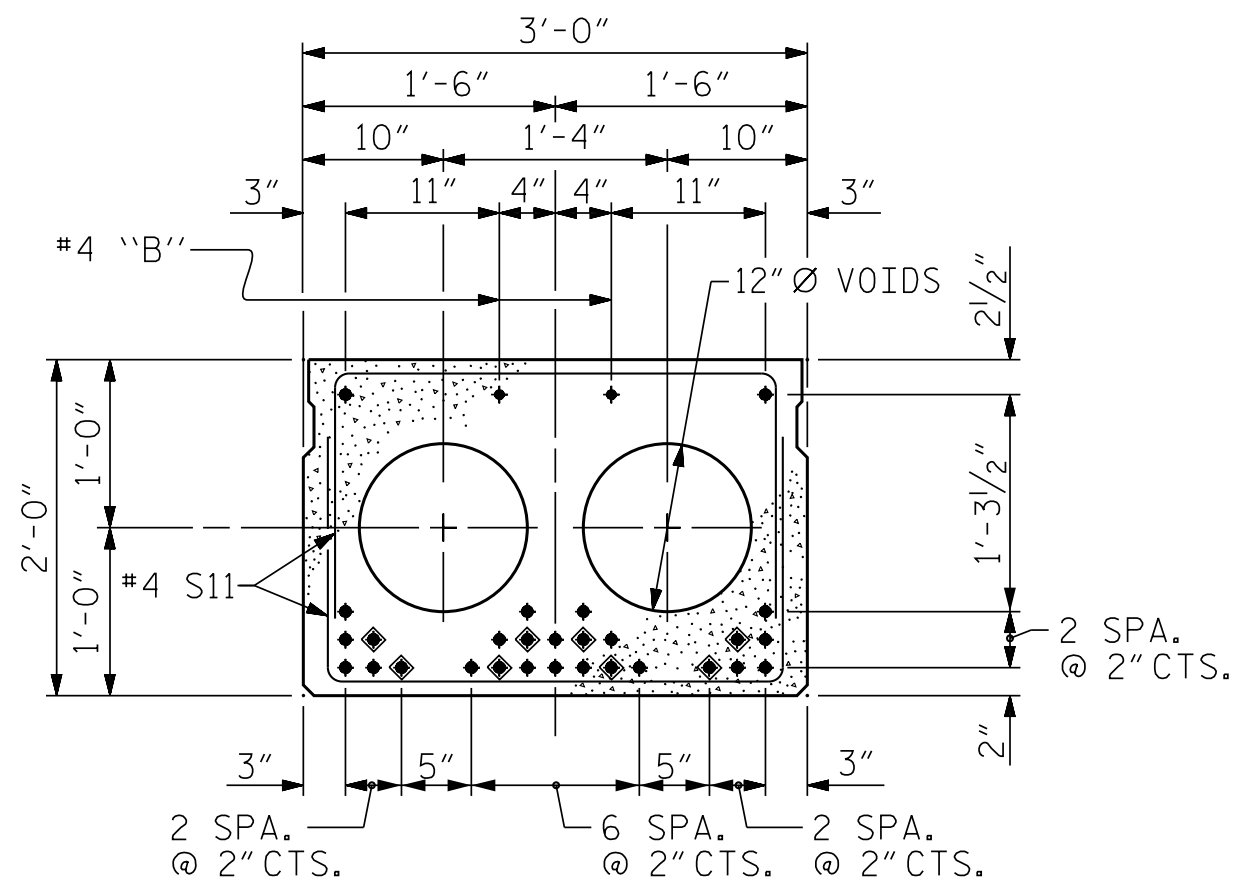


THREADED INSERT DETAIL

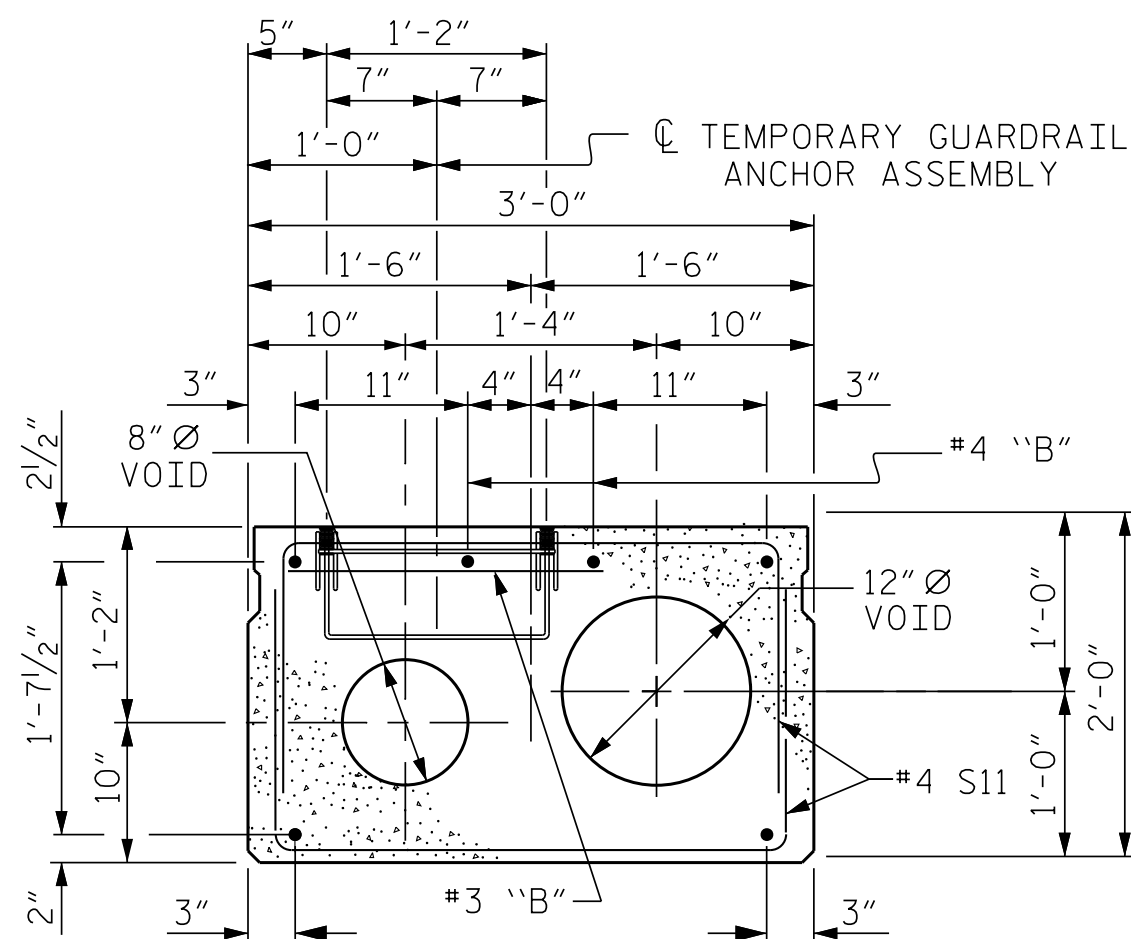


END ELEVATION

SHOWING PLACEMENT OF DOUBLE STIRRUPS
AND LOCATION OF DOWEL HOLES.
(STRAND LAYOUT NOT SHOWN.)
INTERIOR SLAB UNIT SHOWN-EXTERIOR SLAB
UNIT SIMILAR EXCEPT SHEAR KEY LOCATION.



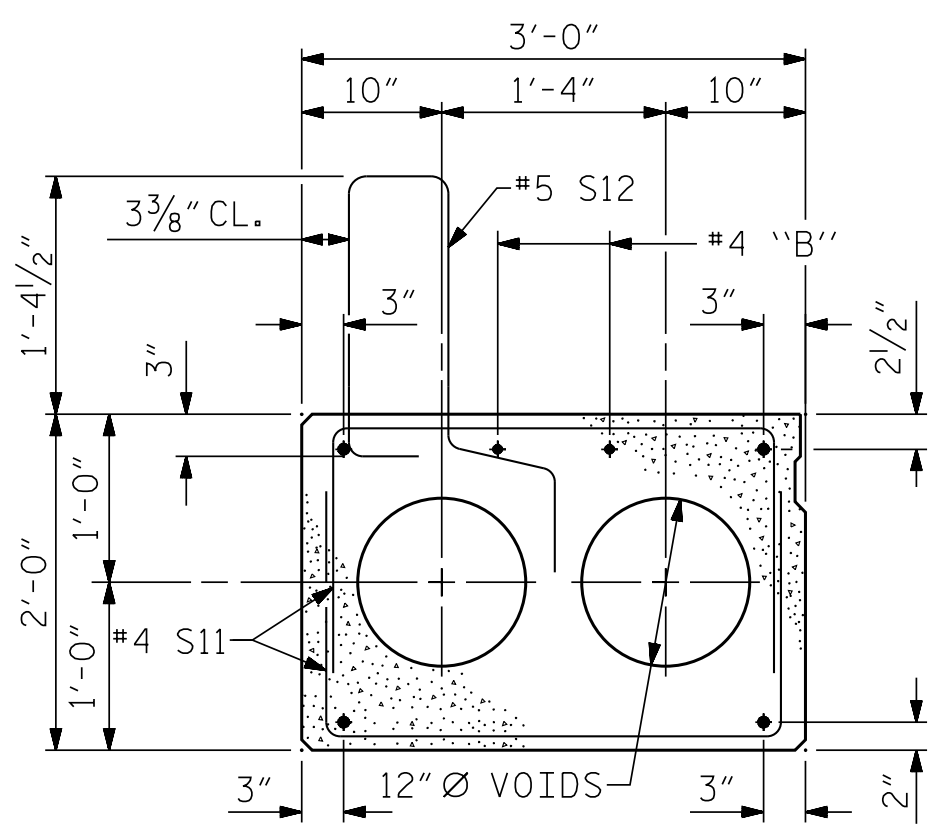
INTERIOR SLAB SECTION (70' UNIT)
(TYPE II & IV)
(28 STRANDS REQUIRED)



(FOR PRESTRESSED STRAND LAYOUT, SEE
"0.6" Ø LOW RELAXATION STRAND LAYOUT"
(TYPE I, II, IV AND V)

FOR TEMPORARY GUARDRAIL ANCHOR
ASSEMBLY LOCATION, SEE SECTION
OF ANCHOR ASSEMBLY LOCATION ON
"ANCHORAGE DETAILS FOR TEMPORARY
GUARDRAIL ANCHOR ASSEMBLY FOR
TYPE III CORED SLAB UNIT" SHEET.

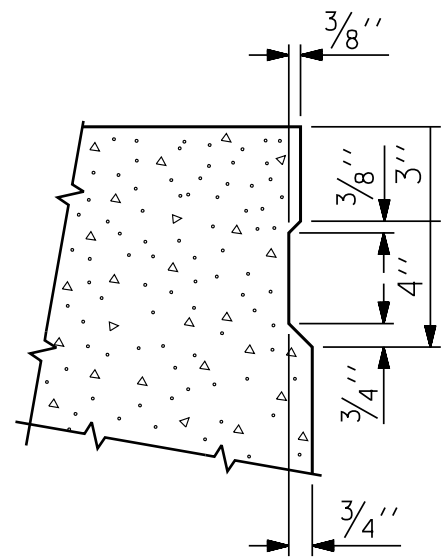
0.6" Ø LOW RELAXATION STRAND LAYOUT



EXTERIOR SLAB SECTION
(TYPE I & V)
(FOR PRESTRESSED STRAND LAYOUT, SEE
INTERIOR SLAB SECTION.)

◆ BOND SHALL BE BROKEN ON THESE STRANDS FOR A
DISTANCE OF 12'-0" FROM END OF CORED SLAB UNIT.
SEE STANDARD SPECIFICATIONS, ARTICLE 1078-7.

DEBONDING LEGEND



SHEAR KEY DETAIL

NOTE: OMIT SHEAR KEY ON OUTSIDE FACE
OF EXTERIOR CORED SLABS.

PROJECT NO. B-6034
JACKSON COUNTY
STATION: 13+20.50 -L-

SHEET 1 OF 5



DOCUMENT NOT CONSIDERED FINAL
UNLESS ALL SIGNATURES COMPLETED



Johnson, Mirmiran, & Thompson Inc.
4700 Falls of Neuse Rd, Suite 100,
Raleigh, NC, 27609
License No: C-3097

STATE OF NORTH CAROLINA
DEPARTMENT OF TRANSPORTATION
RALEIGH
STANDARD
3'-0" X 2'-0"
PRESTRESSED CONCRETE
CORED SLAB UNIT

REVISIONS						SHEET NO. S-5
NO.	BY:	DATE:	NO.	BY:	DATE:	
1			3			TOTAL SHEETS 20
2			4			

STD. NO. 24PCS4-30-60S